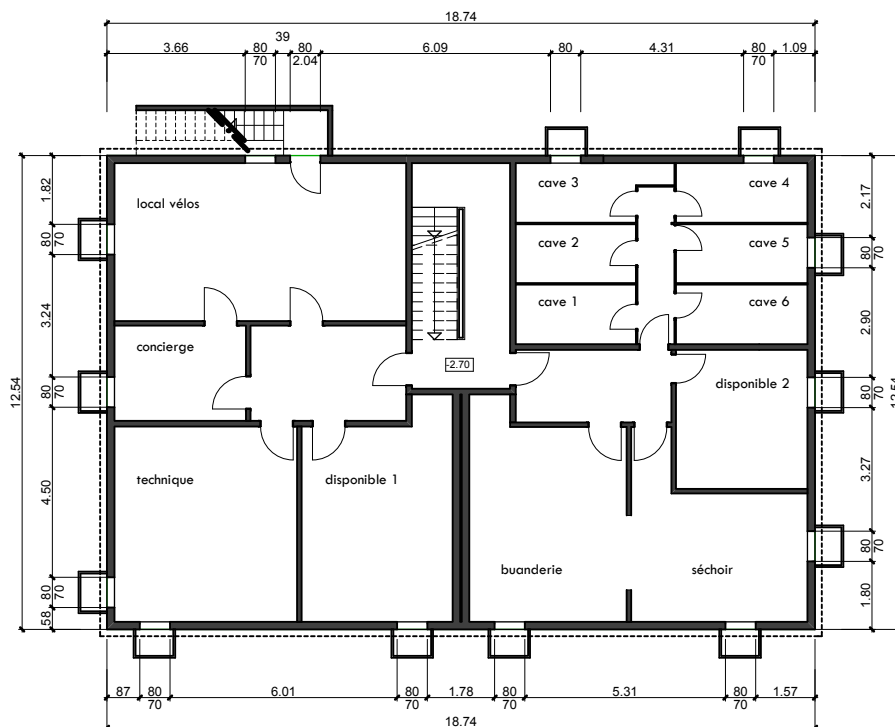


SOUS-SOL

local vélos	32.27 m ²
concierge	8.77 m ²
technique	24.98 m ²
disponible 1	21.55 m ²
cave 1	5.00 m ²
cave 2	5.00 m ²
cave 3	5.57 m ²
cave 4	5.49 m ²
cave 5	5.42 m ²
cave 6	5.49 m ²
disponible 2	12.80 m ²
buanderie	16.21 m ²
séchoir	17.73 m ²



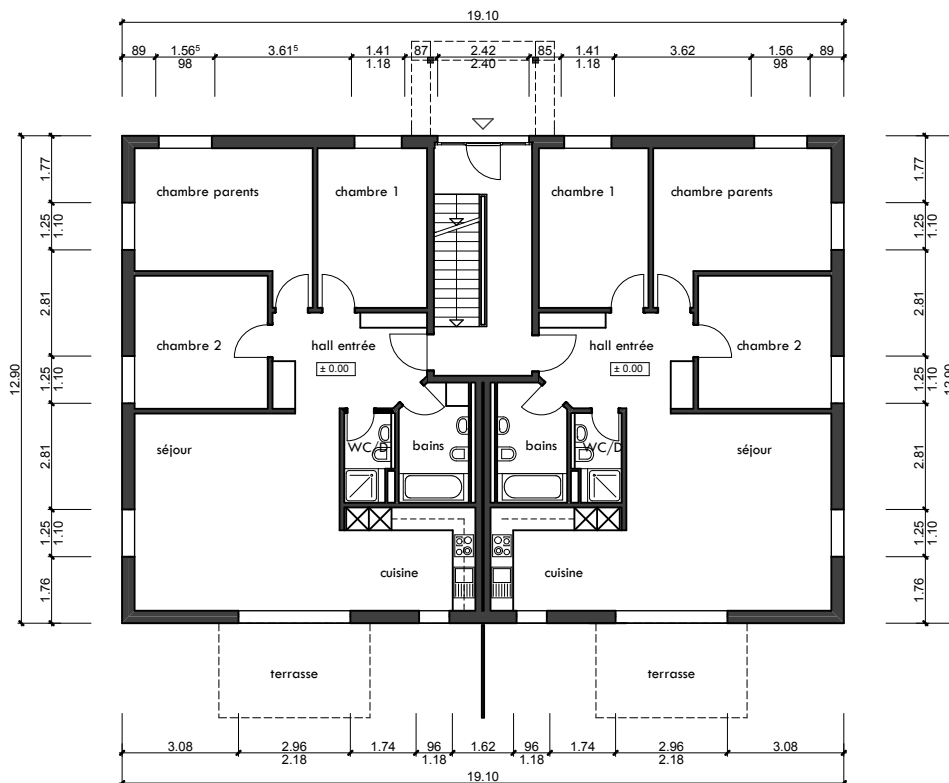
IMMEUBLE 3006

HOME + FOYER

REZ-DE-CHAUSSEE

deux appartements 4 1/2 pièces

chambre parents	16.39 m ²
chambre 1	12.25 m ²
chambre 2	12.45 m ²
hall entrée	10.35 m ²
séjour	28.48 m ²
cuisine	9.83 m ²
WC/D	3.18 m ²
bains	5.63 m ²
terrasse	10.00 m ²



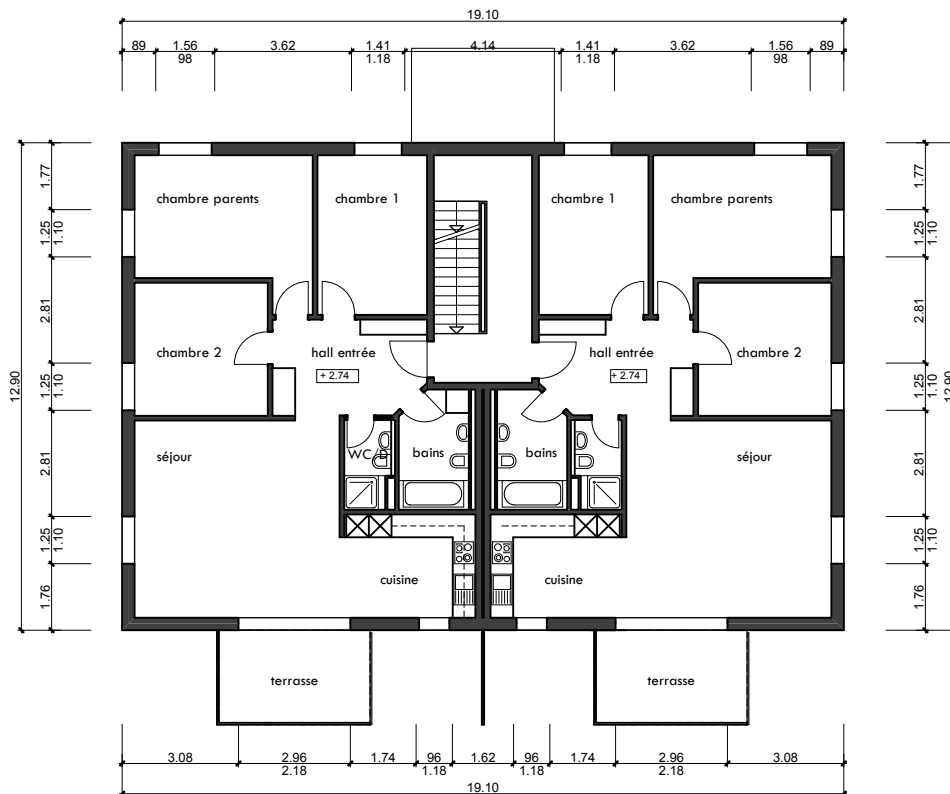
IMMEUBLE 3006

HOME + FOYER

ETAGE

deux appartements 4 1/2 pièces

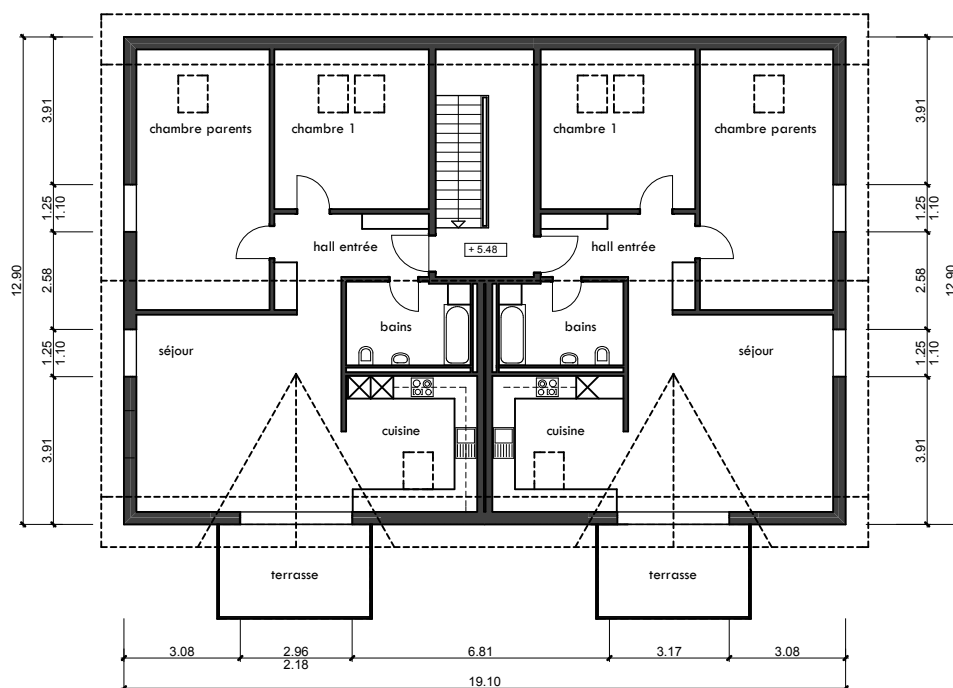
chambre parents	16.39 m ²
chambre 1	12.25 m ²
chambre 2	12.45 m ²
hall entrée	10.35 m ²
séjour	28.48 m ²
cuisine	9.83 m ²
WC/D	3.18 m ²
bains	5.63 m ²
terrasse	10.00 m ²



ETAGE

deux appartements 3 1/2 pièces

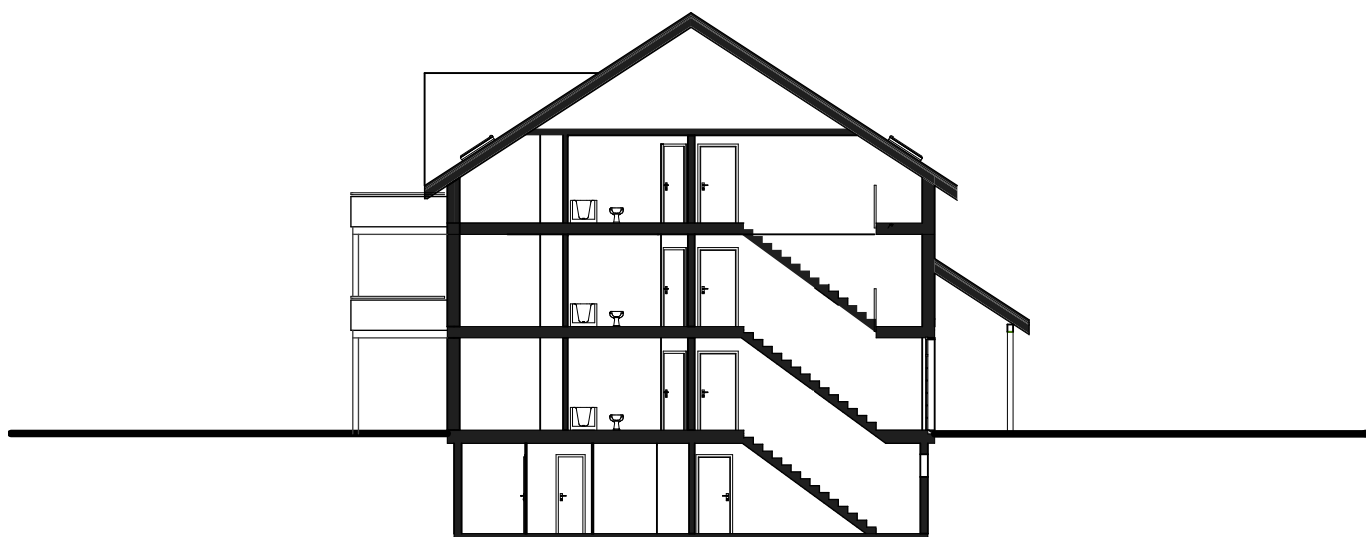
chambre parents	22.90 m ²
chambre 1	15.64 m ²
hall entrée	9.12 m ²
séjour	28.48 m ²
cuisine	13.05 m ²
bains	7.83 m ²
terrasse	10.00 m ²



IMMEUBLE 3006

HOME +
FOYER

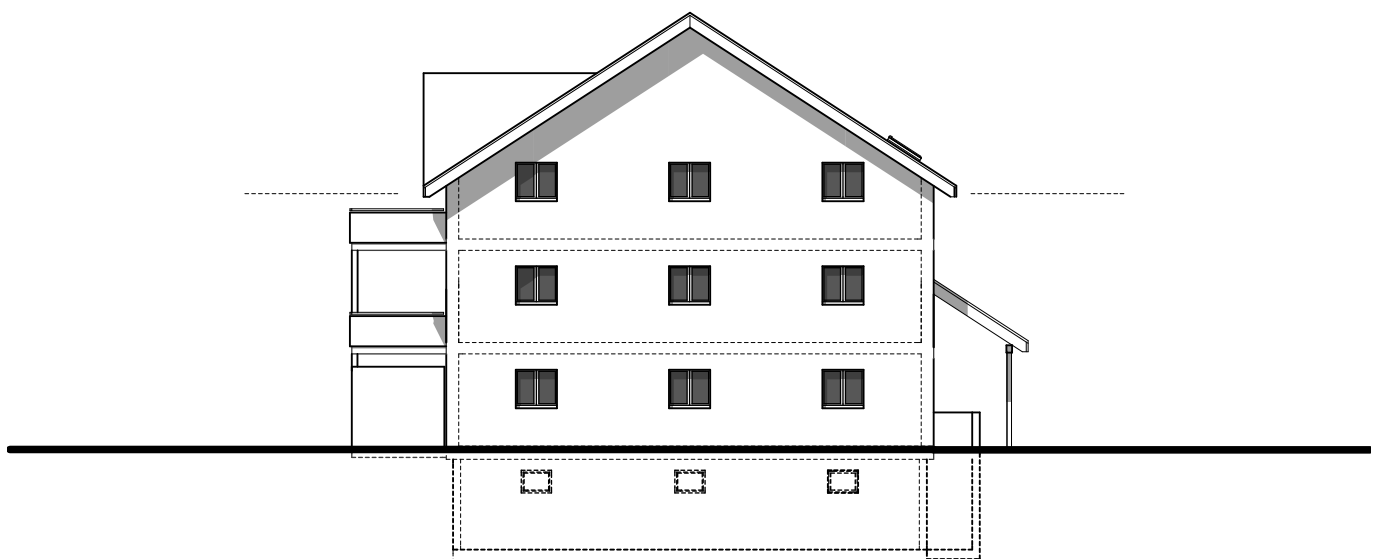
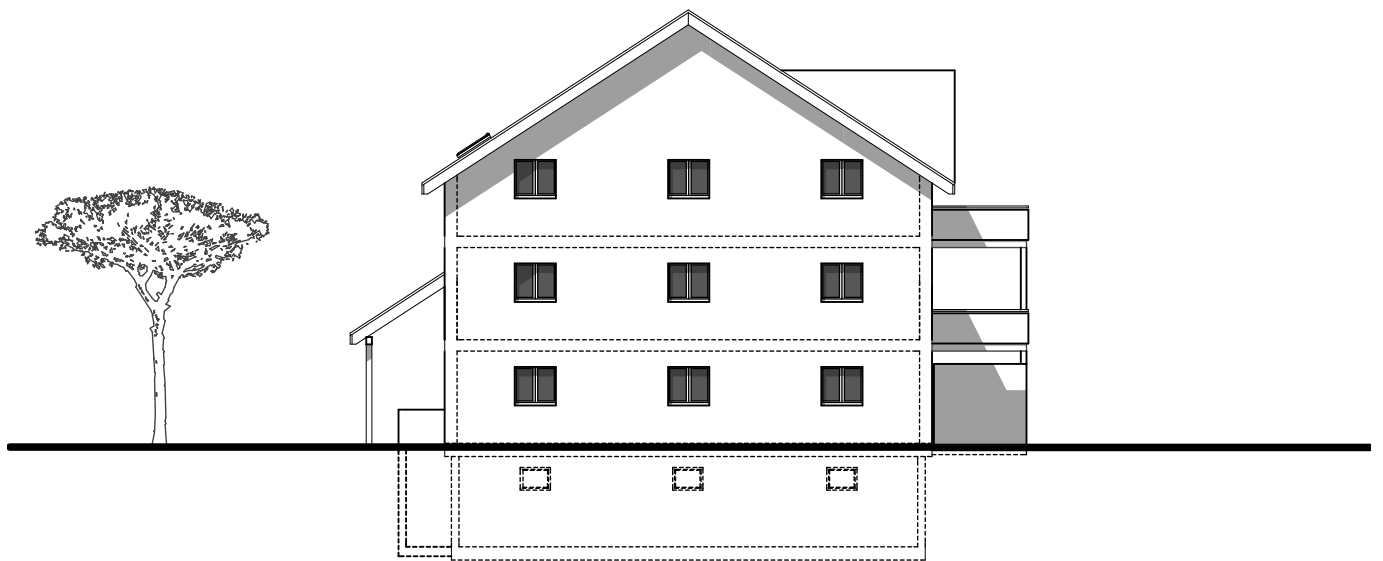
COUPE



IMMEUBLE 3006

HOME +
FOYER

FAÇADE OUEST
FAÇADE EST



IMMEUBLE 3006

FAÇADE SUD
FAÇADE NORD

HOME + FOYER

